

Roslyn Farm Office Park

320 A Charles Dimmock Pkwy Suite 3,
Colonial Heights, VA

*Established
Office Space in
Colonial Heights*

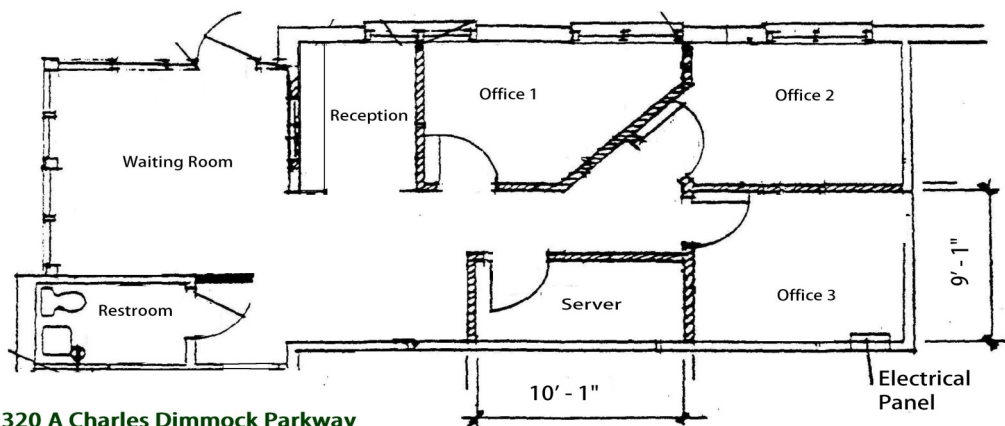
*Close Proximity
to new area hotels
and restaurants*

*Located near
Southpark Mall
and Fort Lee*

*Easy Access to
Temple Avenue
and Interstate 95*

Move In Ready

Available Now



320 A Charles Dimmock Parkway
Ste 3
850 Sq. Ft.
Colonial Heights, Virginia

Roslyn Farm Corporation
804.526.0820

- 850 sq. ft. building featuring 3 offices, reception desk, 1 in suite restroom & a large waiting room
- Central Location within Colonial Heights
- Convenient Interstate Access to I-95, I-295, and I-85
- Ample parking & quite adjacent medical tenants
- Call or email for more information



Roslyn Farm
CORPORATION

Developing Industry With Nature In Mind.

Fielding Quarles

fquarles@roslynfarmcorp.com

Phone: 804.526.0820

Fax: 804.526.0931

www.roslynfarmcorp.com