

Dobbs Building

400 Southpark Blvd. Suite D

Colonial Heights, VA

*Established Retail/
Office Space in
Colonial Heights,
near Fort Lee*

*National Flag
Hotels and
Restaurants in
Immediate Area*

*I-95 Visibility, exit
53 (111,000VPD)*

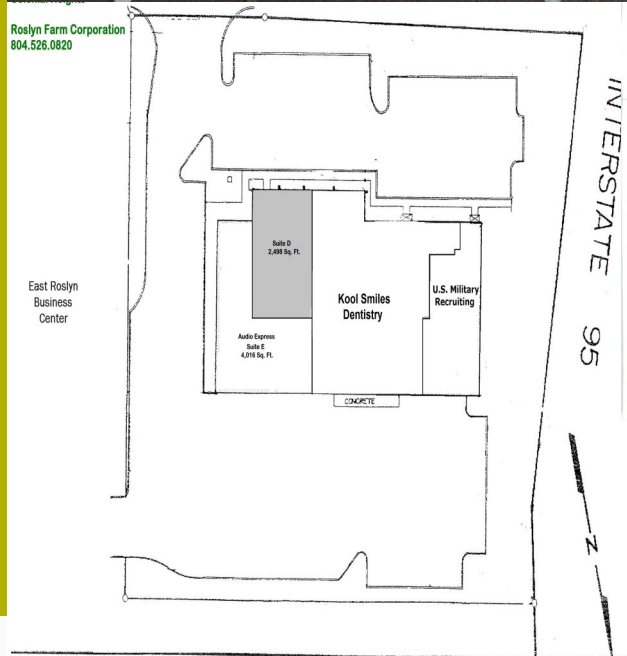
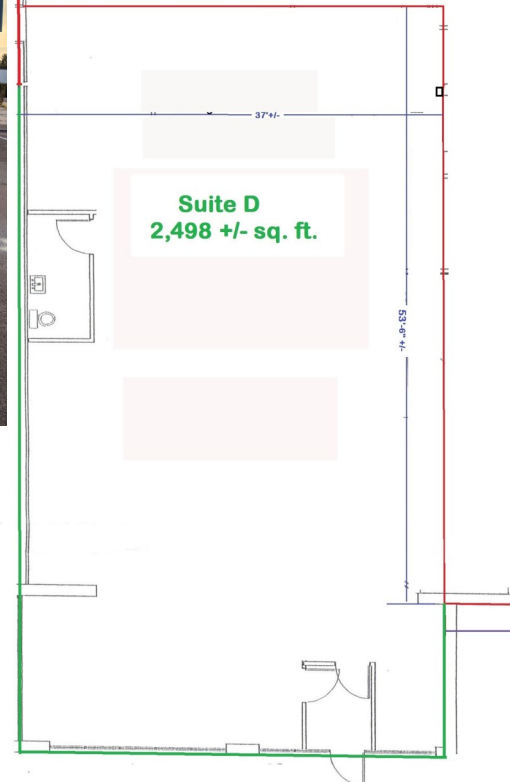
*Build to Suit
Available*

Available Now



400 Southpark Boulevard
Suite D
Dobbs Building
2,498 Sq. Ft.

Roslyn Farm Corporation
804.526.0820



- 2,498 Sq. Ft. shell space with one existing restroom
- Central Location Near Southpark Mall and Fort Lee
- Easy Access to I-95 and I-85
- Ideal for small office location
- Email or call for more information



Roslyn Farm
CORPORATION

Developing Industry With Nature In Mind.

Fielding Quarles

fquarles@roslynfarmcorp.com

Phone: 804.526.0820

Fax: 804.526.0931

www.roslynfarmcorp.com