

E. Roslyn Farm Lot 12 - 5.6 +/- Acres Colonial Heights, VA

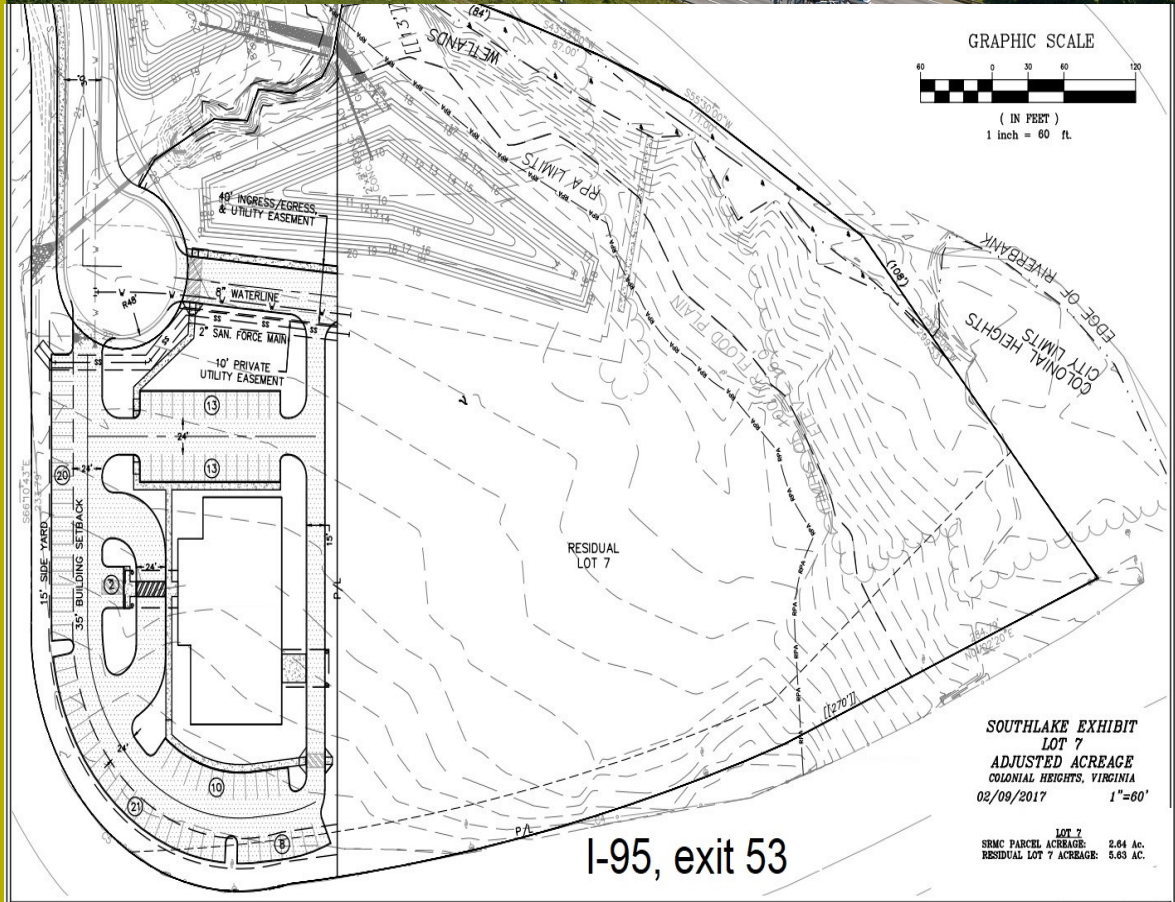
*Commercial
Property with
easy Access &
Visibility to
Interstates 95
(Exit 53
111,000VPD)*

*Utilities along E
Roslyn Ct.*

*Access to
Appomattox
River Trail*

*BMP already in
place*

Zoned: B-2



Fielding Quarles

fquarles@roslynfarmcorp.com

Phone: 804.526.0820

www.roslynfarmcorp.com

• 5.6 +/- Total Acres, 3.4 +/- Buildable