

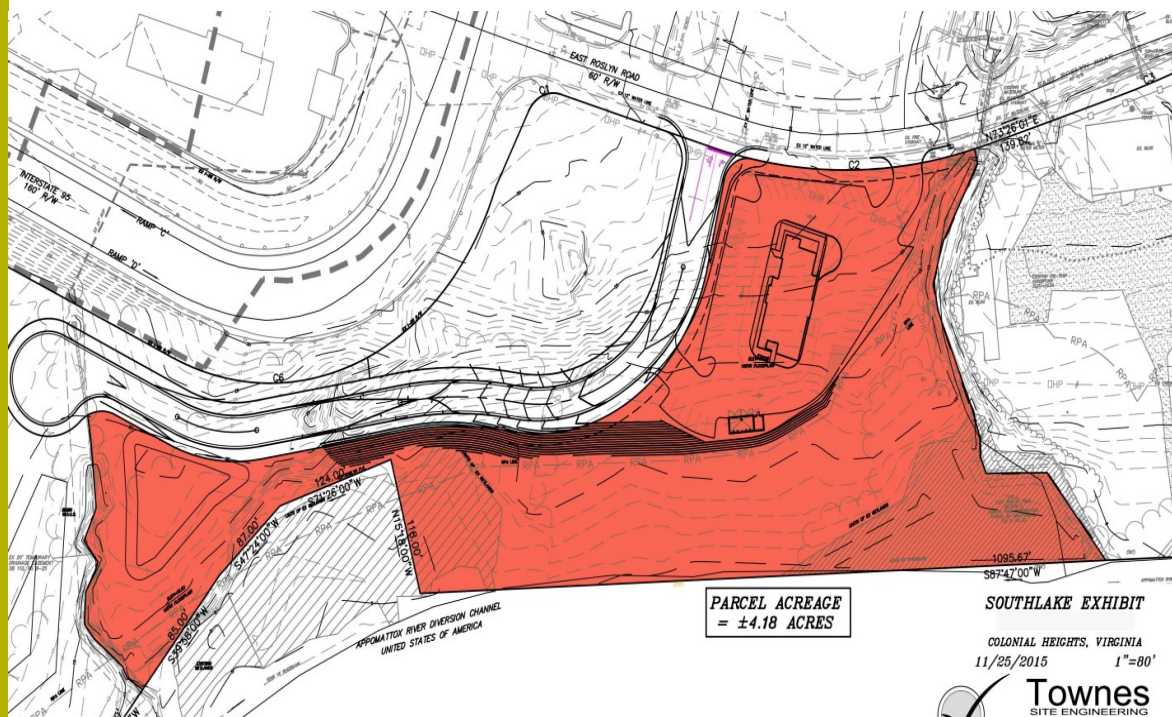
E. Roslyn Farm Lot 9 - 4.2 +/- Acres Colonial Heights, VA

*Commercial
Property with
easy Access &
Visibility to
Interstates 95
(Exit 53
111,000VPD)*

*Utilities along E
Roslyn Rd.*

*Access to
Appomattox
River Trail*

*Stormwater in
place*



Fielding Quarles
fquarles@roslynfarmcorp.com
Phone: 804.526.0820
www.roslynfarmcorp.com

- 4.18 +/- Total Acres, 1.27 +/- Buildable Acres, Zoned: B-2
- BMP already in place