

# Kvasnicka Farm - 229 +/- Acres

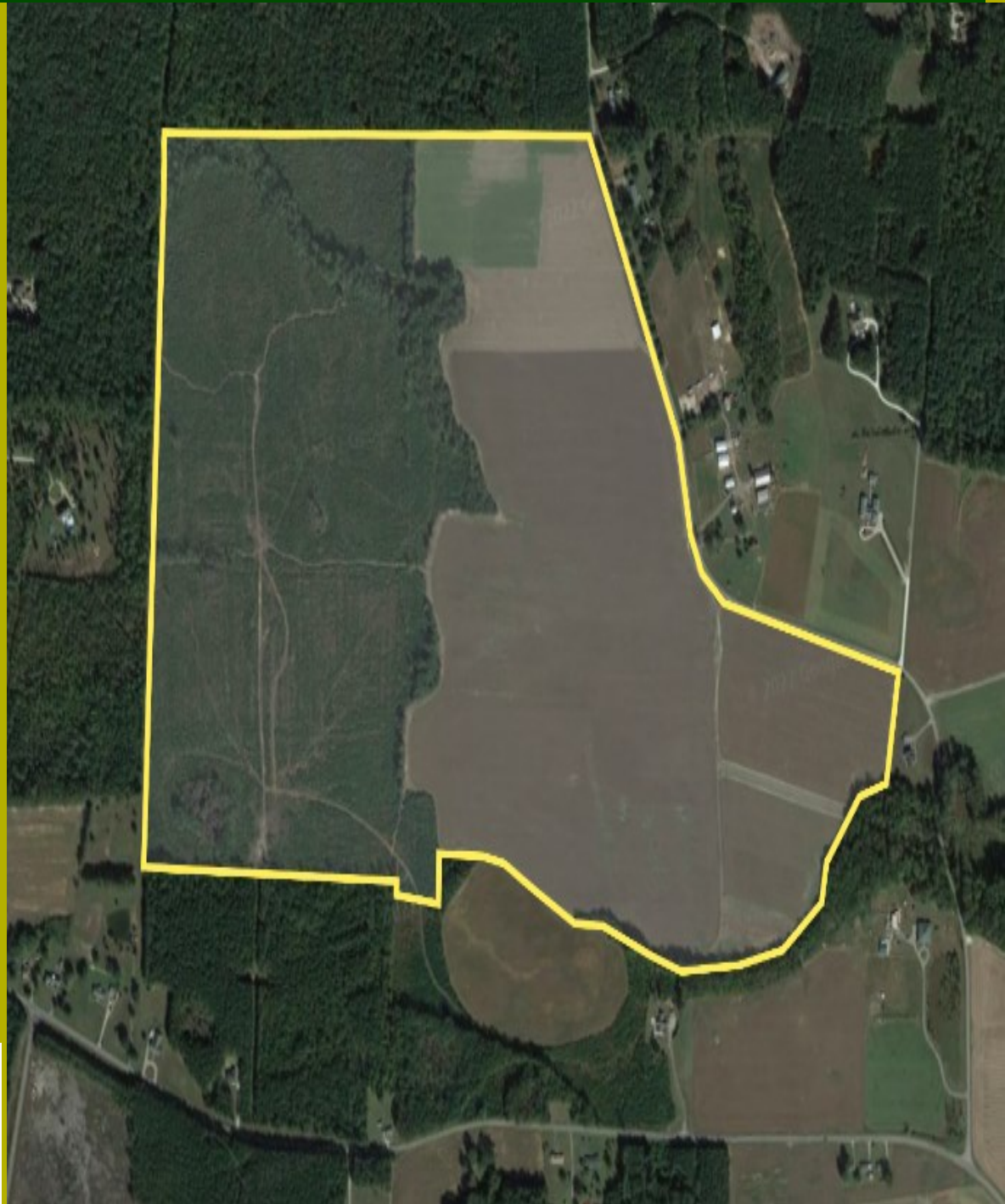
## Prince George County, VA

*Agricultural &  
Residential  
Property*

*Enterprise  
Zone Incentives*

*Access off of  
RTE 628 & 608*

*Close Proximity  
to I-95, exit 45*



**Roslyn Farm**  
CORPORATION

Developing Industry With Nature In Mind.

Fielding Quarles

fquarles@roslynfarmcorp.com

Phone: 804.526.0820

www.roslynfarmcorp.com

- 229.1 +/- Total Acres
- Zoned: Residential (R-1): 96.09 Acres & Agricultural (A-1): 132.99 Acres