

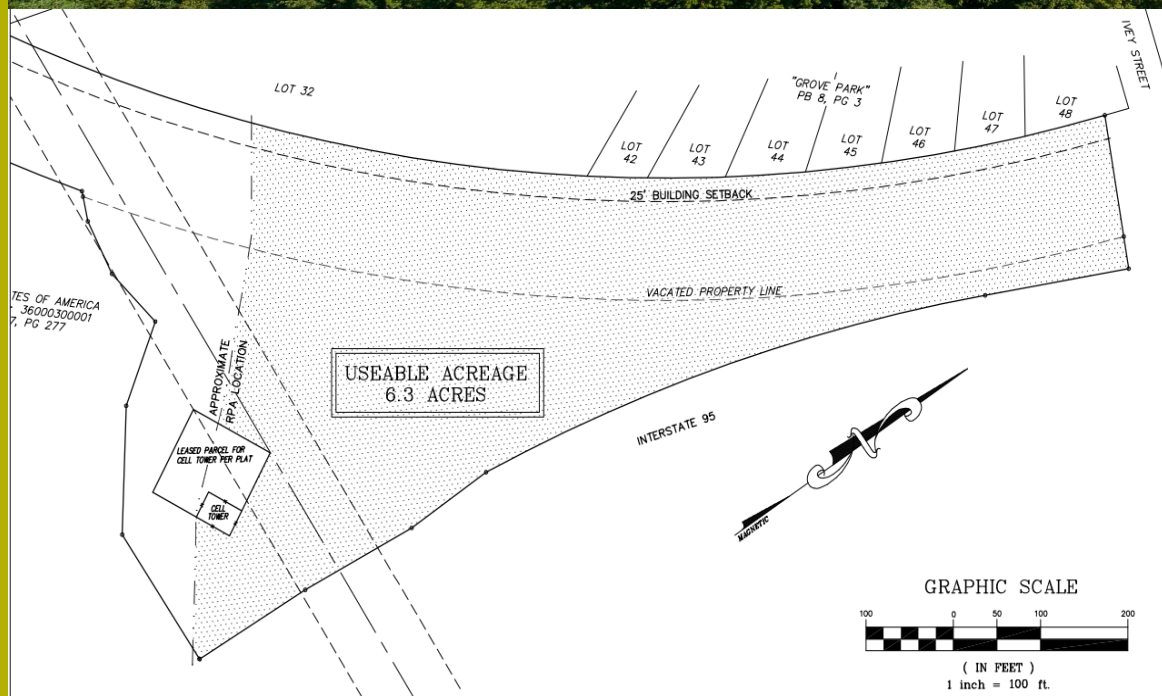
# West Roslyn Farm - 8.6 +/- Acres Colonial Heights, VA

*Highly Visible  
Property with  
easy Access &  
Visibility to  
Interstates 95  
(Exit 53  
111,000 VPD)*

*Adjacent to  
Appomattox  
River Trail*

*Additional  
Onsite  
Revenue  
Available*

*Zoned:  
Industrial*



Fielding Quarles

fquarles@roslynfarmcorp.com

Phone: 804.526.0820

www.roslynfarmcorp.com

- 8.6 +/- Total Acres
- 6.3 +/- Buildable Acres outside RPA
- Overlooks I-95 (Exit 53)